

Client

Nature's FUSIONS
ESSENTIAL OILS

Source

Wintergreen (Gaultheria procumbens)
NF-WINT-19-A

Sample

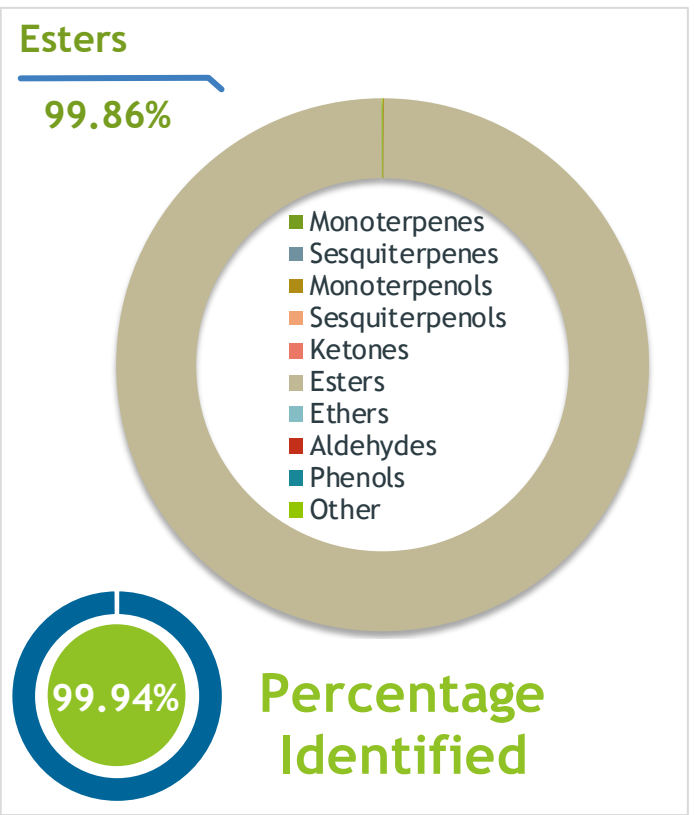
Wintergreen (*Gaultheria procumbens*)

Batch #:..... | NF-WINT-19-A

Type:..... | Essential Oil

CAS Number:... | 90045-28-6

Nature's Fusions



Client

Nature's FUSIONS
ESSENTIAL OILS

Website

Primary

99.73% | Methyl salicylate

0.13% | Ethyl salicylate

APPROVED

Conclusion

No adulterants, diluents, or contaminants were detected via this method. This oil meets the expected profile for genuine essential oil of Wintergreen (*Gaultheria procumbens*)

Internal Number: | EVS-2870

Essential Validation Services

747 SW 2nd Ave IMB 12 Suite 306
Gainesville, FL 32601

317.361.5044 |
<https://essentialvalidationservices.com/>

adam@essentialvalidationservices.com

Monoterpenes	0.01%
Sesquiterpenes	0.01%
Monoterpenols	0.06%
Sesquiterpenols	0.00%
Ketones	0.00%
Esters	99.86%
Ethers	0.00%
Aldehydes	0.00%
Phenols	0.00%
Other	0.06%

ESSENTIAL VALIDATION SERVICES | 747 SW 2ND AVE GAINESVILLE, FLORIDA 32601 | 317-361-5044

Client



Source



Wintergreen (*Gaultheria procumbens*)
NF-WINT-19-A

Total Percentage		99.94%			
Number	RT	Area %	Compound Name	RI	Chemical Family
1	16.84	0.01%	Limonene	1029.50	Monoterpene
2	19.74	0.05%	Linalool	1099.00	Monoterpenol
3	22.66	0.01%	Terpinen-4-ol	1180.57	Monoterpenol
4	23.78	99.73%	Methyl salicylate	1192.29	Phenolic Ester
5	26.21	0.13%	Ethyl salicylate	1278.00	Phenolic Ester
6	31.38	0.01%	beta-Caryophyllene	1427.14	Sesquiterpene

ESSENTIAL VALIDATION SERVICES | 747 SW 2ND AVE GAINESVILLE, FLORIDA 32601 | 317-361-5044

- This report is the digitally signed and will only be considered valid if the signature is intact.
- This report may not be published without the consent of Essential Validation Services.
- Chromatograph image may not show full run time

